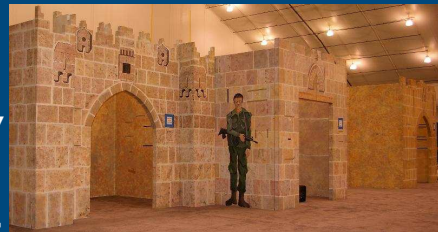


A WALK THROUGH JERUSALEM

from the Bureau of Jewish Education of Greater Boston

We are very excited to offer you the opportunity to host our award winning exhibit, **A WALK THROUGH JERUSALEM**. Originally created for "Jerusalem 3000", the exhibit enjoyed much acclaim as it traveled around the country, visited by over 50,000 children and adults. Now, updated for the 60th anniversary of the establishment of the State of Israel, we invite you to bring this exhibit to your community.



A WALK THROUGH JERUSALEM is a mobile, hands-on interactive exhibit for children and families of all ages. Travel through the eight "Gates of Jerusalem" to explore this unique and timeless city. Experience the sights, sounds and smells of Jerusalem through a variety of activities, poetry, archaeological finds, artifacts, music, and games.

GATE ACTIVITIES

GOLDEN GATE: *Orientation and Introduction*

DUNG GATE: *HaKotel*

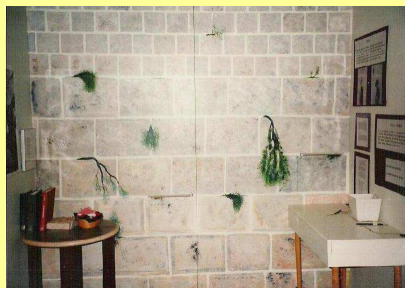
- * Visit the Western Wall
- * Send a prayer to the Kotel
- * Play the "Jerusalem Stone Game"
- * Match the stones from different Temple periods to the Wall

DAMASCUS GATE: *Jewish Ethnic Origins*

- * View Jewish Art and artifacts
- * "Sephardic or Ashkenazic?" quiz
- * Make a Hamsa art project

HEROD'S GATE: *Jerusalem Through Art*

- * Artists' Views of Jerusalem
- * Make a Mizrach art project



ZION GATE: *Jerusalem Through Literature*

- * Timeline of Jerusalem
- * Quotes, poetry and short stories about Jerusalem
- * "Jerusalem in Literature" game
- * Write a quote about Jerusalem
- * Vote for your favorite name for Jerusalem

NEW GATE: *Home to Three Religions*

- * View and identify religious artifacts of the 3 major religions: Judaism, Christianity and Islam
- * Listen to "Calls to Prayer" of each religion
- * Creative writing: My Religious Identity

JAFFA GATE: *The Old City of Jerusalem*

- * "Where in Jerusalem...?" map game
- * Climb the ramparts and look out over the "city"
- * Jerusalem puzzles and games

LION'S GATE: *Archaeological View*

- * Find and match archaeological artifacts to a chart
- * Do an artifact rubbing
- * View photos of current digs
- * Follow a timeline of the "Building and Rebuilding" of Jerusalem
- * View actual archaeological tools
- * Make a Mosaic art project

PHYSICAL DESCRIPTION

This 1000 sq. ft. exhibit is comprised of eight, free-standing sections. Each section is designed as one of the gates of the Old City of Jerusalem. In each gate there are a variety of activities.

The gates vary in size: 8' squares or 6' x 8' rectangles.

DATES AVAILABLE

March 2009 - April 2011

BOOKING PERIOD

One week minimum

RENTAL FEE

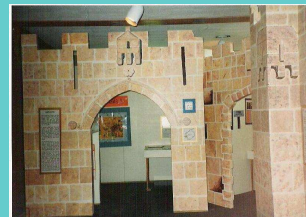
\$750 per week
\$1450 for 2 weeks
\$2100 for 3-4 weeks

TRANSPORTATION

The exhibiting institution is responsible for the round-trip shipping costs associated with the exhibit, unless the exhibit is booked 'back-to-back' with another institution, in which case the costs are shared.

JERUSALEM RESOURCE KIT

The BJE has produced a **Jerusalem Resource Kit** for group or classroom use which complements the exhibit and is recommended for use in teaching about Jerusalem, both before and after visiting the exhibit. **The Jerusalem Resource Kit** may also be used separately without a visit to the exhibit for those wishing to study about Jerusalem. To purchase this kit, and other resources that enhance the experience of the exhibit, contact the BJE.



CONTACT and RENTAL INFORMATION

To arrange a rental, or for any questions about the exhibit, contact
Debbie Yoburn at the BJE:

617.965.7350 x224 dyoburn@bje.org



Bureau of Jewish Education
333 Nahanton Street
Newton, MA 02459

ph. 617.965.7350 fax: 617.965-9776
www.bje.org



Why we loved A WALK THROUGH JERUSALEM.....

comments from 2008



EVERYONE thought it was incredible! We had children, adults, seniors, people with disabilities. Those that had been to Israel were awestruck at the authenticity of the gates and the materials. Those who had not been to Israel were eager to go after visiting the exhibit. And those that will never be able to go because of age, illness or economics, felt like they had been, and thanked us for the exhibit!

...we were in awe of the engineering of the exhibit and the quality and craftsmanship of it. Once the gates were up, the educational materials were well organized and abundantly creative and informative.

Soref JCC, Ft. Lauderdale, FL

Truly a gift for any community.

Our campers, staff and faculty were all amazed by the exhibit and thought it was one of the best things we had done.

Crane Lake & Eisner Summer Camp

FANTASTIC!! If there was a grade higher than A++ this exhibit would get it. There were over 20,000 people at this event and those that experienced the gates were thrilled. It exceeded our expectations!

All the students who came through the exhibit sent prayers off to the Kotel. They really took their time to think about what to say and put their whole hearts into being precise in what their prayers were. Many of our Christian school visitors prayed for the safety of the Israeli people and the "return" of the Moshiach now. Much was learned and much fun was had. Thank you for sending us such an amazing historical, spiritual, and relevant piece of interactive art!

Jewish Community Federation of Richmond

Israel was exciting and alive for our students. They loved climbing the Tower of David and smelling the spices of the shuk.



The Bureau of Jewish Education of Greater Boston
333 Nahanton Street
Newton, MA 02459
ph. 617.965.7350 fax: 617.965-9776
www.bje.org